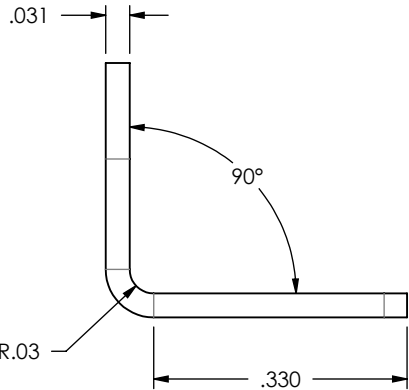
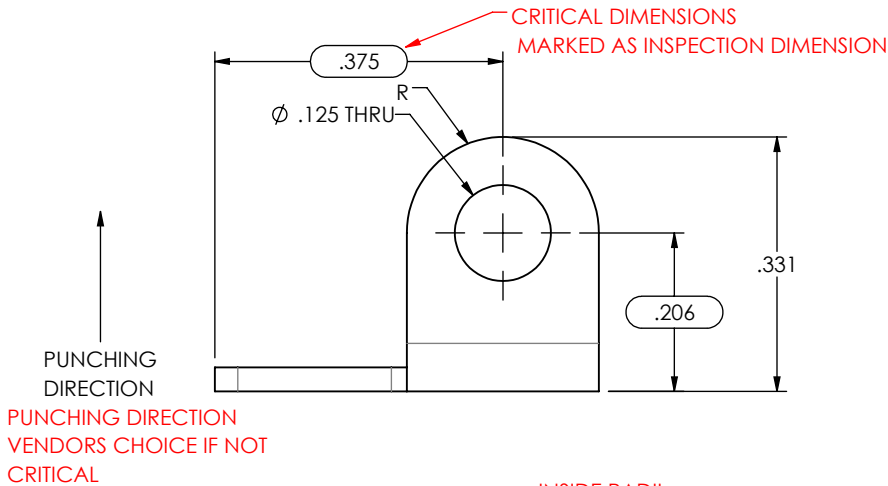


ISOMETRIC VIEW
SCALE: 4:1



- NOTES:
1. INTERPRET DRAWING PER ASME Y14.5M-1994.
 2. REMOVE ALL SHARP EDGES.
 3. FINISH: CLEAR ZINC ASTM B633 TYPE 3
 4. BEND AREAS SHALL BE FREE OF CRACKS.
 5. BULK PACKAGE IN CARBOARD BOX TAG P/N SAMPLE DRAWING.

DRAWING STANDARD
CORNER CALL OUT

FINISH

PACK REQU.

SURFACE FINISH

INSIDE RADII
ANGULAR TOL.

PROPRIETARY AND CONFIDENTIAL
THE INFORMATION CONTAINED IN THIS DRAWING IS THE SOLE PROPERTY OF MICROFORMS INC. REPRODUCTION IN PART OR AS A WHOLE WITHOUT THE WRITTEN PERMISSION OF MICROFORMS INC. IS PROHIBITED.

MATERIAL-CONDITION: CRS ASTM A1008 1/2 HARD			
UNLESS OTHERWISE SPECIFIED: DIMENSIONS ARE IN INCHES INSIDE RADIUS: .010 CHAMFERS: .015 ANGULAR: ± 2° FRACTIONAL ± 1/32 TWO PLACE DECIMAL ± .01 THREE PLACE DECIMAL ± .005			
DESIGNER	R. FEHSE	DATE	8/22/2016
DRAWN	R. FEHSE	DATE	8/22/2016
CHKD	R. FEHSE	N/A	
ENG APPR.	N/A	N/A	
PROJECT: SAMPLE			
FINISH 64 MICROINCHES			

MATERIAL TYPE, CONDITION
UNITS



DESCRIPTION: CLAMP			
DWG SIZE A	SCALE: 4:1	PART NUMBER: SAMPLE DRAWING	REVISION REV-A
THIRD ANGLE			SHEET 1 OF 1